



Avi GSLB Overview

Avi Technical Reference (v17.2)

Copyright © 2020

Avi GSLB Overview

[view online](#)

Overview

This article overviews Avi GSLB, which provides load balancing of applications across multiple geographically dispersed locations, while providing centralized configuration, application monitoring, and analytics.

What is GSLB?

Global Server Load Balancing (GSLB) is the act of balancing an application's load across instances of the application that have been deployed to multiple locations (typically, multiple data centers and/or public clouds). Application load at any one of those locations is usually managed by a "local" load balancer, which could be Avi Vantage or a third-party ADC solution.

GSLB is usually implemented to achieve one or more of the following goals for an application:

- Provide optimal application experience to users/clients who are in geographically distributed areas
- Offer resilience to loss of a data center or a network connection
- Perform non-disruptive migration to or addition of another data center

GSLB High-Level Functionality

To achieve these goals Avi GSLB performs the following functions:

1. It chooses the location (data center/cloud) to which to steer the client's requests
2. It monitors health of the virtual services so that it can choose the best location (i.e., rule out unhealthy ones)
3. It synchronizes configuration and state across GSLB sites, so that #1 and #2 can continue despite certain failures

Functions 2 and 3 are performed by Avi GSLB in a fashion that is totally opaque to end-users. Avi uses the Domain Name System (DNS) for providing the optimal destination information to the user clients. When a client (typically a browser) performs a DNS query on fully qualified domain names (FQDNs), Avi GSLB responds with the IP address (VIP) of the *optimal* application instance. The optimal address can and will change based on the load balancing algorithm, health of the application instances, and the location of the clients.

How Avi GSLB Works

As an example, refer to the setup in figure 1:

- Avi Vantage is running in four locations (GSLB sites), three on-premises and one in AWS. Each site has its own Avi Controller cluster (represented by a single Controller icon).
- Application "A" has virtual services running in all four locations. These virtual services are identified by VS-A1 through VS-A4.
- Three of the four locations (DC-1, DC-2, and AWS) have global DNS services (DNS-1, DNS-2, and DNS4) that are synchronized. They are all equally authoritative for the subdomain A.acme.com.
- The fourth site (DC3) does not run a global DNS service and therefore can't provide request-steering information.

Request Flow

Step 1: FQDN Address Resolution

In figure 1 the client is shown sending an HTTPS request to download the home page of application A. Its FQDN (A.acme.com) needs to be mapped to an IP address not yet known to the client. A hierarchical tree of DNS resolvers eventually identifies the corporate DNS for acme.com.

Because domain A.acme.com has been delegated to Avi's global DNS, the corporate DNS forwards the request to one of the three GSLB DNS instances (in this case to DNS-2).

DNS-2 has four candidates for the optimal VS choice: VS-A1, VS-A2, VS-A3, and VS-A4. It chooses VS-A3 based on the load balancing algorithm, health, client location, etc. DNS-2 responds to the DNS query with the VIP of VS-A3, which eventually makes it to the original client.

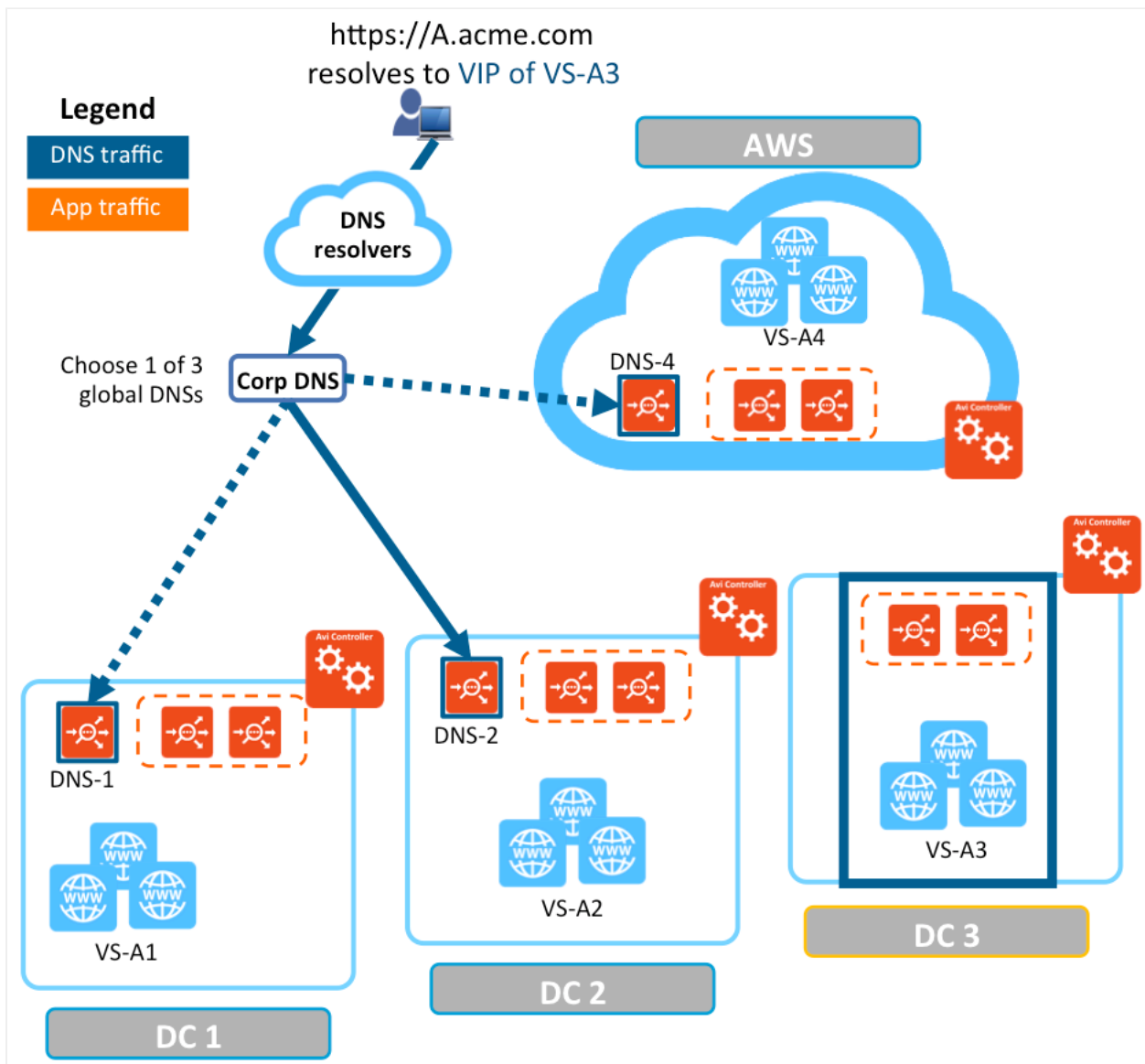


Figure 1. FQDN address resolution

Step 2: Application Traffic Flows to Optimal Virtual Service

As shown in figure 2, the client uses the VIP of VS-A3 to send its HTTP request.

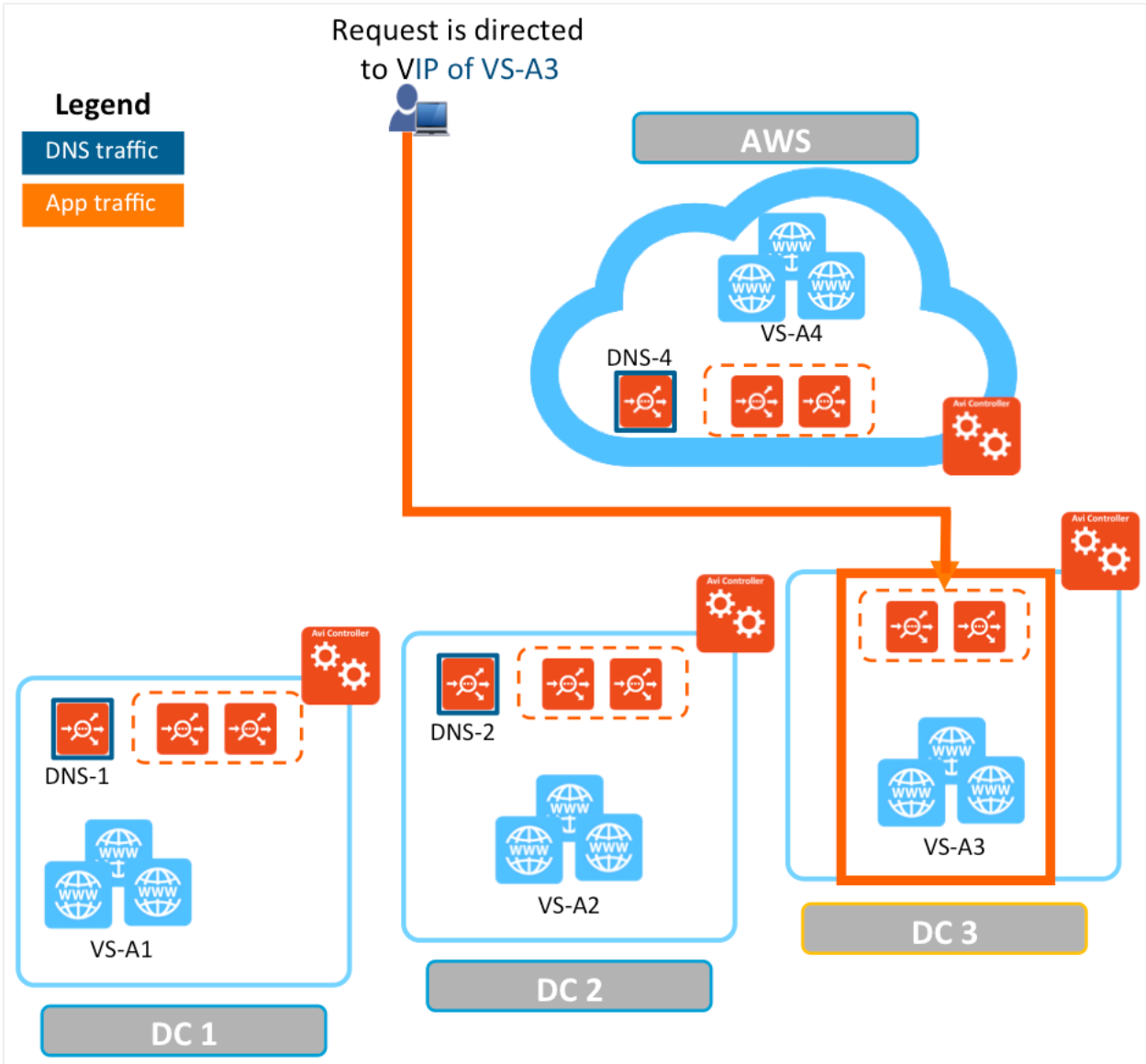


Figure 2. Application traffic is directed to the optimal VIP

Step 3: Local Load Balancing

As shown in figure 3, one of the SEs in the 2-SE group receives the request that has been directed to the VIP of VS-A3. It then load-balances it to one of VS-A3's 3 servers. VS-A3 responds directly to the client.

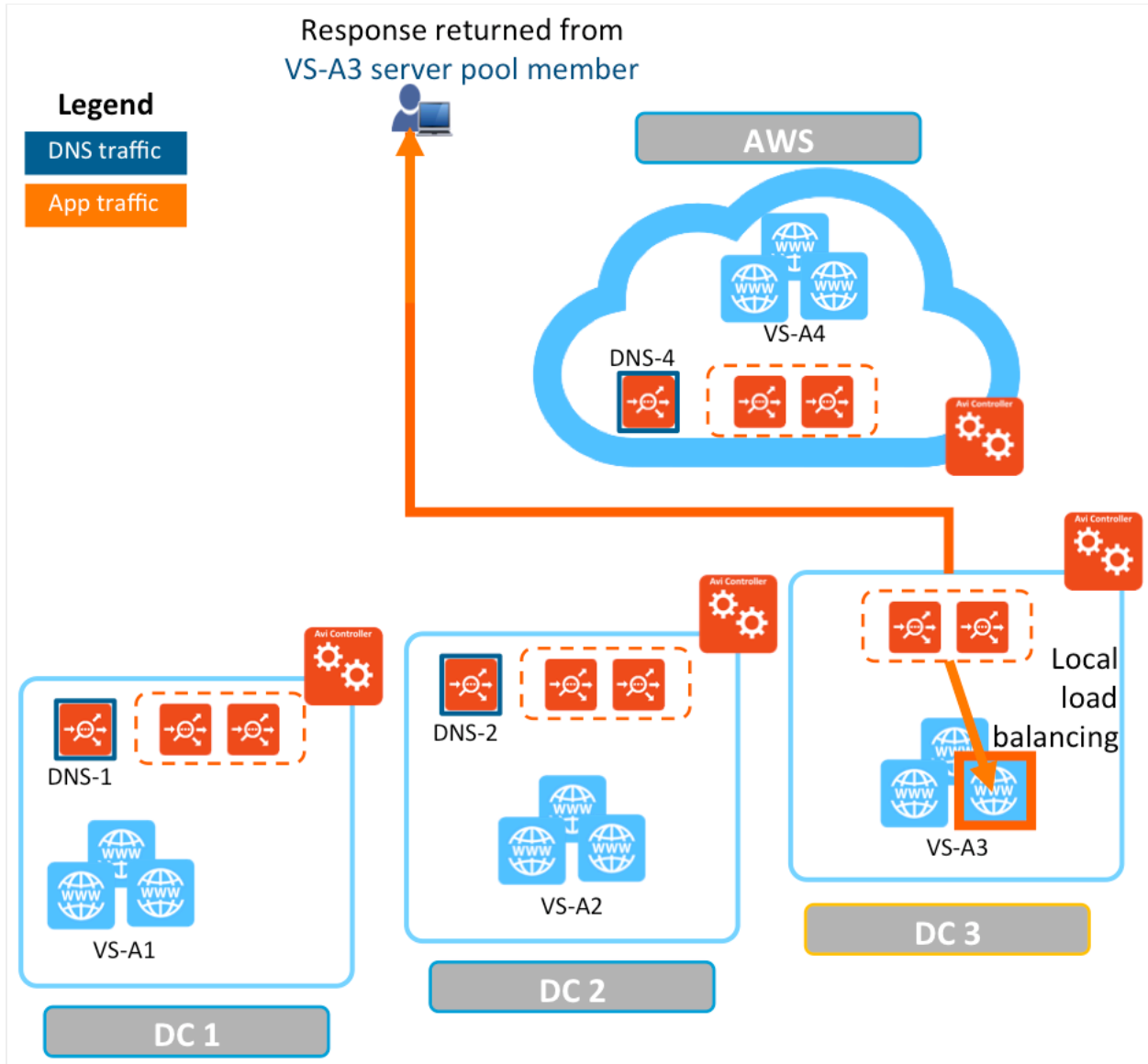


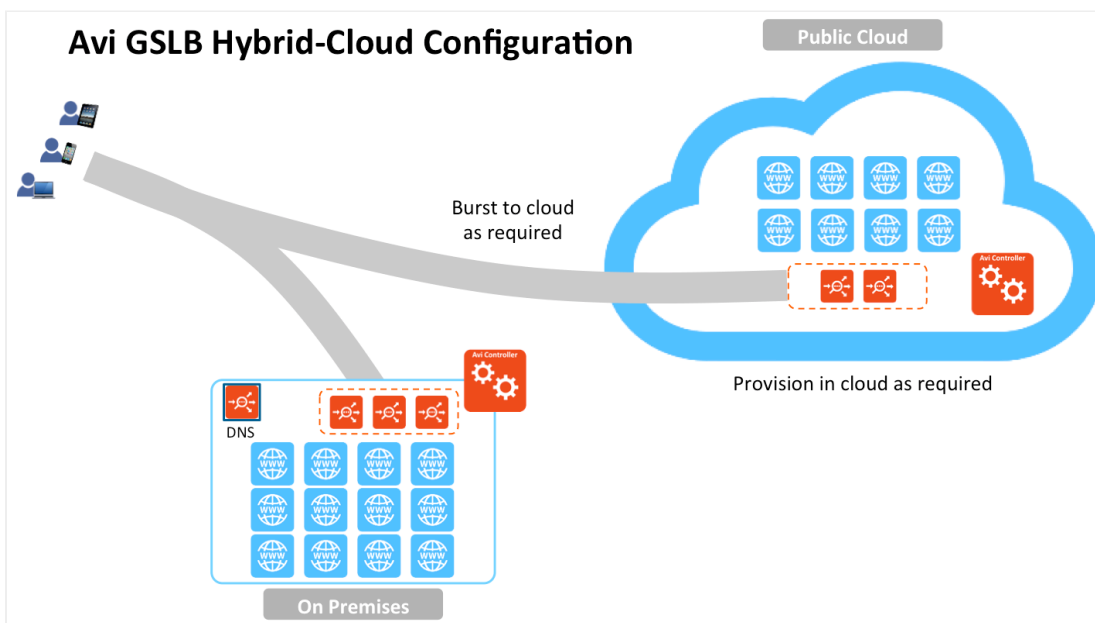
Figure 3. Local load balancing

GSLB Use Cases

Here are a few use cases for Avi GSLB:

- Optimal application experience for geographically distributed users
 - Applications are deployed in multiple data centers.
 - Avi GSLB can steer user traffic to the most optimal location.
- Application high availability across data center failures

- Applications are deployed in multiple data centers.
- In case of a data center failure, application instances running in the remaining data center(s) can take over the user traffic.
- Disaster recovery
 - Applications are deployed in two data centers.
 - While both are healthy, all traffic is directed to the primary DC.
 - If the primary DC fails, the global DNS directs all user traffic to the other.
- Hybrid cloud with "cloud bursting" (depicted below)
 - Applications are deployed across private and public clouds.
 - When/if an application experience an unusually high request load, Avi GSLB "bursts" to the public cloud site to absorb the load.



Avi GSLB Benefits

- Centralized provisioning with automated discovery of applications across sites
- Application monitoring, logs, and analytics across sites
- Hybrid cloud support
- Unified solution for local and global load balancing

Feature Support

Avi Vantage 16.3 and higher

- DNS-based load balancing
- Active/DR GSLB
- Active/active GSLB with consistent hash
- Hybrid cloud support
- Centralized provisioning and visibility
- Control-plane and data-plane health monitoring
- Multitenancy support
- 3rd-party load balancer support

Avi Vantage 17.1

- Active/active GSLB based on geographic location
- Centralized application logs

Avi Vantage 17.2

- [Support for a two-level GSLB algorithm: location-based at the global-service level with other algorithms at the GSLB pool level](#) (17.2.3)
- [Support for GSLB site persistence based on HTTP cookies](#) (17.2.5)
- [For GSLB site selection ...](#)
- Ability to define a single fallback site and set the preferred-site option (17.2.5)
- Fallback site limit increased from 1 to 16 (17.2.7)

Note: GSLB is not supported for IPv6.

Recommended Reading

The following KB articles provide more detailed information on Avi GSLB:

- [Avi GSLB Architecture, Terminology and Object Model](#)
- [DNS for GSLB](#)
- [Avi GSLB Site Configuration and Operations](#)
- [How to Change a Follower Site to the New Leader Site](#)
- [Avi GSLB Service and Health Monitors](#)
- [NAT-aware Public-Private GSLB Configuration](#), available in 17.1.2
- [Geolocation-based Load Balancing Algorithm for GSLB Members](#), available in 17.1.1
- [GSLB Site Cookie Persistence](#), available in release 17.2.5
- [Selective Assignment of a GSLB Service to DNS Virtual Services](#), available in 17.2.3
- [DNS Policy for GSLB Site Selection](#)
- [GSLB Site Selection with Fallback and Preferred-Site Options](#), available in 17.2.5
- [GSLB Integration with F5 GTM](#)
- [Upgrades in an Avi GSLB Environment](#)